

pardo

wall beds

ASSEMBLY INSTRUCTIONS

SINGLE, DOUBLE, QUEEN

DIY MECHANISM ONLY

Tools Required For Assembly

No 2 & No 4 Phillips Head Screwdrivers

No 2 Slot Head Screwdriver

Hammer

Electric Drill (Hammer Drill for Masonry)

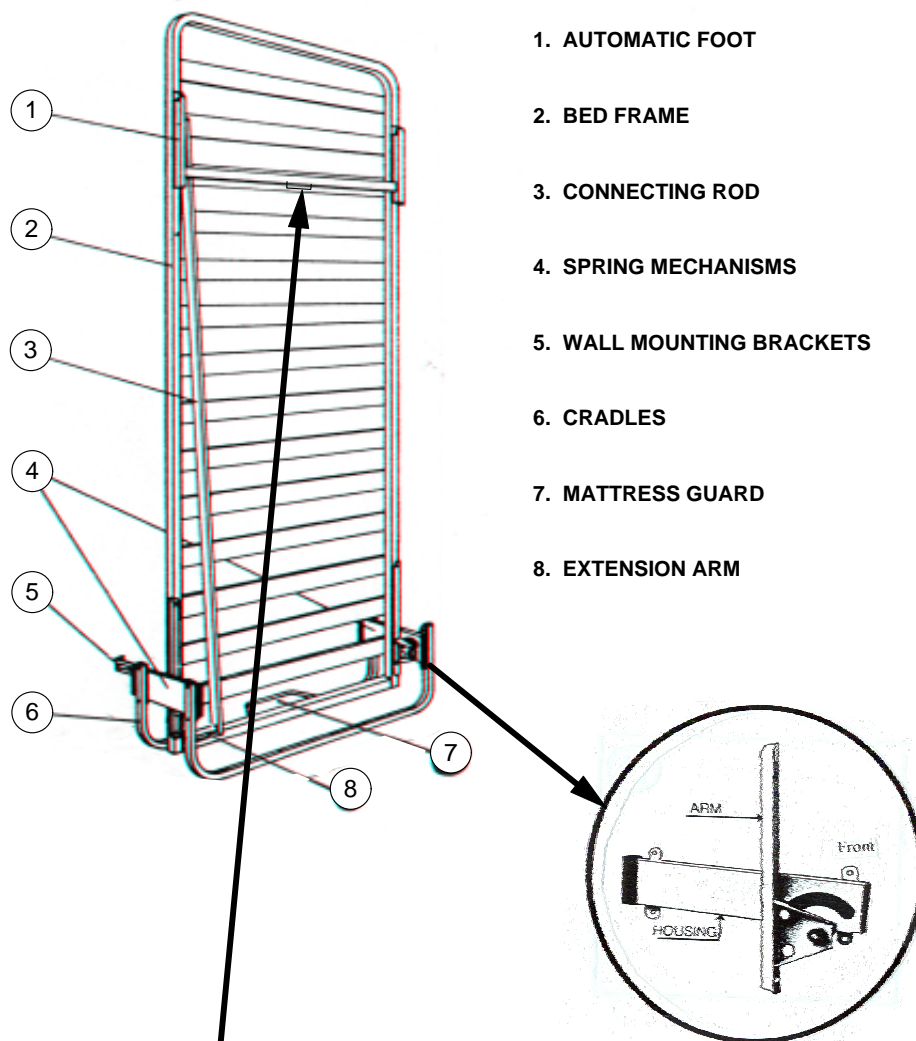
6.5mm Masonry Drill Bit

Pliers

Spirit Level

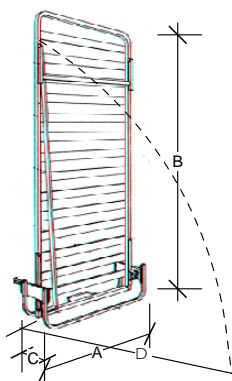
Adjustable Spanner

DIY Mechanism Components



WARINING: USE RED PULL HANDLE TO AVOID DAMAGE TO LEGS

Dimensions



	Dimension A	Dimension B	Dimension C	Dimension D
Single	1055	Single 1950	Single 470	Single & Double 2100
Double	1555	Double 1950	Double 470	Queen 2250
Queen	1655	Queen 2100	Queen 470	

All specifications produced by Pardo Australian Pty Ltd are subject to change without notice. please check dimensions with Pardo Australian prior to constructing cabinetry

Assembly / Instructions

- * Attach spring mechanisms (#4) to front and back cradle (#6) using small nuts and bolts provided. Ensure to attach the wall mounted brackets (#5) with the ends turned inwards together with the spring mechanism to the top rear bolt. (See diagram 4)
- * Fix the cradle assembly to the floor using the 75mm screws provided. 50mm green wall plugs are also provided if fixing to concrete floor.

NOTE: If fixing through a carpet floor, it is recommended that a small cut be made in the surrounding area to be drilled so that no threads are pulled in the carpet pile. Also if fixing to a timber floor, 2mm pilot hole is to be drilled in the floor before screwing through the cradle into the floor.

- * Once the cradle is fixed to the floor, fix the wall mounted brackets (#5) to the wall using the 28mm screws provided. 50mm green wall plugs are also provided if fixing to concrete or brick walls.

NOTE: It is very important that the cradle is fixed back to the wall and floor securely as there will be substantial tension exerted on the cradle when the mechanism is in the lowered position.

- * If not using pillow catch, bolt on mattress guard(s) to the top of the bed frame through the predrilled holes and using nuts and bolts provided.
- * Lower the bed frame in between the mechanism arms and bolt through the predrilled holes to the cradle assembly. You might find that the bed frame will be a tight fit in between the mechanism arms. (See diagram 4)
- * Remove the split pin and washer from the extension (#8) and attach the connecting rod (#3) to the extension through the predrilled hole on the connecting rod (#3) and replace the washer and then the split pin. You might need to lower the bed frame slightly to line up the extension (#8) and the connecting rod (#3). (See diagram 4)

WARNING

When operating the wall bed mechanism the bed frame must be carefully lowered all the way to the floor and NOT left to drop freely. If the bed frame is lowered without the weight of a mattress it may spring back causing injury. Do not try to vary the tension of the spring mechanism as it is NOT adjustable.

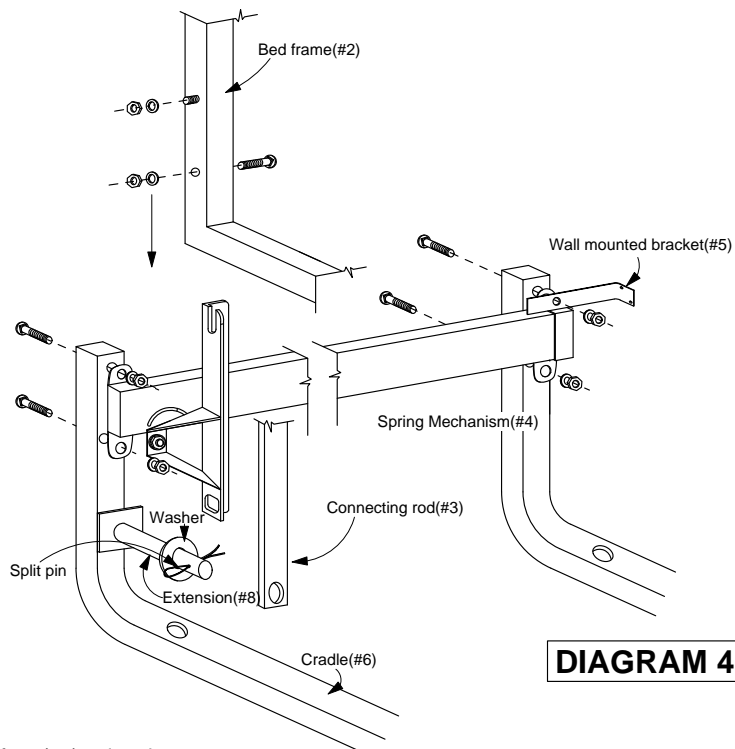


DIAGRAM 4

- * Attach the red handle supplied to the Automatic foot (#1) using the screws provided. To avoid damage to the connecting rod, be sure that the bed is lowered using the red handle.

Attaching the Mattress Straps

- * Separate the each mattress strap by unclipping the buckles leaving you 1 short and 1 long strap.
- * Attach the long mattress strap by looping around the bed frame and then loop the buckle through the opposite end of the strap. Pull the strap through until the strap is tightened around the metal bed frame. Repeat the same step with the short strap on the opposite side of the bed.
- * Each set of straps should be located approximately 2 x bed slats down from the foot end of the bed and approximately 4 bed slats up from the bedhead end.

Operating Wall Bed Mechanism

- * The wall bed should be lowered using the red appropriate handle.
- * All wall beds should be carefully lowered all the way to the floor and not left to drop freely.
- * The bed should be carefully guided to the up right or closed position with only the sheets on it.
- * Remove blankets & doona's prior to lifting up.
- * Please refrain from standing and jumping on the bed.

WARNING: USE RED PULL HANDLE TO AVOID DAMAGE TO LEGS